

RL 60

Pneumatic-hydraulic tools for blind rivets

Technical parameters:

Type	RL 60
Maximum pressure	7 bar
Setting power	18,2 kN/6 bar
Working stroke	26 mm
Weight	2,6 kg
Rate Force/Weight	7 kN/kg
Height	340 mm
Length	323 mm
Hose connection	∅ 6 mm (G 1/4")
Consumption of air per 1 rivet (with exhaustion)	4,8 l
Consumption of air per 1 rivet (without exhaustion)	3 l
Level of acoustic pressure	$L_{PAI} < 70 \text{ dB(A)}$
Vibrations (ISO/FDIS 8662-11)	$a_{hw} < 2,5 \text{ m/s}^2$

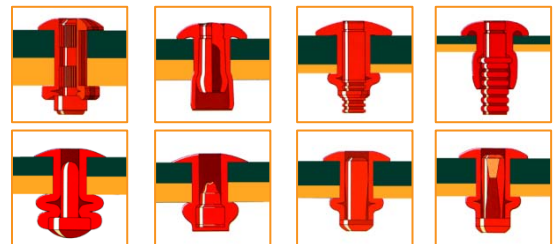
Description of tools:

- ⊙ high output
- ⊙ high working stroke
- ⊙ fluent regulation of the intensity of exhaustion
- ⊙ low noise
- ⊙ low maintenance demands
- ⊙ simple operation
- ⊙ ergonomic handle – fits into the hand well
- ⊙ low value of transferred vibrations
- ⊙ rotary joint air connection
- ⊙ supply of pressured air optional from right or left which can be very easily modified for right or left-hand persons
- ⊙ removable collecting vessel
- ⊙ curtain
- ⊙ spare nosepieces on the bottom of the tools
- ⊙ safety closure preventing release of the mandrel when the collecting vessel is removed
- ⊙ safety over-pressure valve
- ⊙ reliability verified in practice

Scope of use:

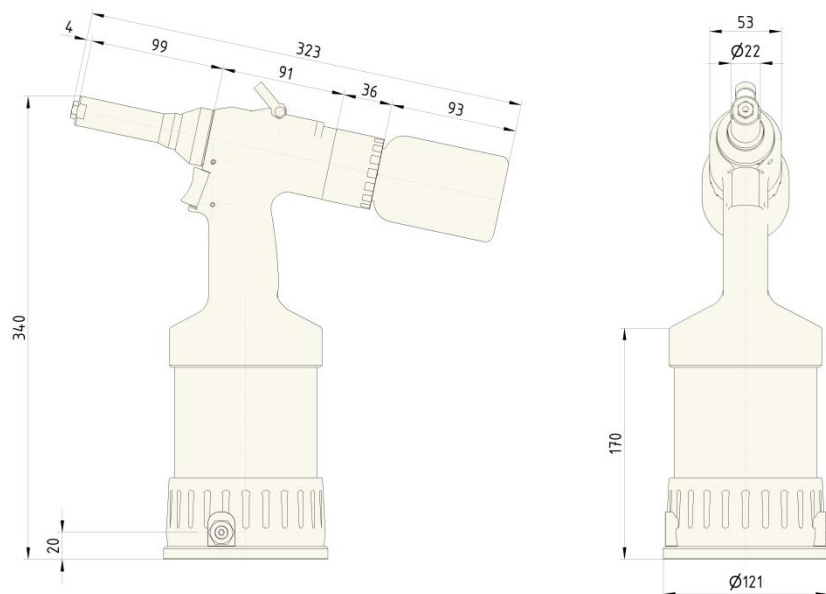
Diameter of the rivet	4	4,8/5	6	6,4	6,4*	8
Aluminium, Copper, Brass	✓	✓	✓	✓	✓	✓
Steel	✓	✓	✓	✓	✓	
Stainless	✓	✓	✓	✓	✓	
Nosepiece in the package	✓	✓	✓	✓	✓	

* structural rivets: TIBULB, M-LOCK, MAGNA-BULB, HUCKLOCK etc.



supply number: 99-0023

Dimensions of tools:



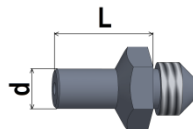
Standard accessories:

- ⊙ Nosepieces (see table) + necessary wrenches for the replacement of nosepieces
- ⊙ Set for adding oil
- ⊙ Air joint connection + Allen wrench for tightening air connection
- ⊙ User and Maintenance Manual, list of spare parts

Other optional accessories:

- ⊙ Shredding head for rivets with grooved mandrel 0,8 mm

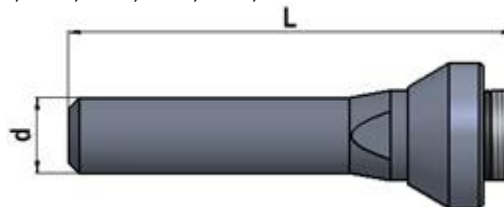
- ⊙ Prolonged nosepieces by 5 mm from L = 10 to 25 mm



- ⊙ Special nosepieces for certain types of rivets, e.g. Monobolt



- ⊙ Prolonged noses Ø d = 22 mm with lengths L = 130, 170, 210, 235, 260, 310 mm



- ⊙ Reinforced collecting vessel
- ⊙ Adapter for removing mandrels by Ø 6 and Ø 10 mm hoses
- ⊙ Inductive sensor for reading of removed rivet mandrels