

# RL 20A

Pneumatic-hydraulic tools for blind rivets

## Technical parameters:

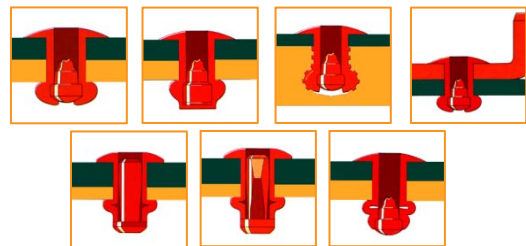
Type	RL 20A
Maximum pressure	7 bars
Setting power	13 kN/6 bar
Working stroke	16 mm
Weight	1,6 kg
Rate Force/Weight	8,12 kN/kg
Height	265 mm
Length	281 mm
Hose connection	ø 6 mm (G 1/4")
Consumption of air per 1 rivet (with exhaustion)	2 l
Consumption of air per 1 rivet (without exhaustion)	0,2 l
Level of acoustic pressure	$L_{PA1} < 70 \text{ dB(A)}$
Vibrations (ISO/FDIS 8662-11)	$a_{hw} < 2,5 \text{ m/s}^2$

## Scope of use:

Diameter of the rivet	2,4	3/3,2	4	4,8/5	6	6,4
-----------------------	-----	-------	---	-------	---	-----

Aluminium, Copper, Brass	✓	✓	✓	✓		
Steel	✓	✓	✓	✓		
Stainless	✓	✓	✓	✓		

Nosepiece in the package		✓	✓	✓		
--------------------------	--	---	---	---	--	--



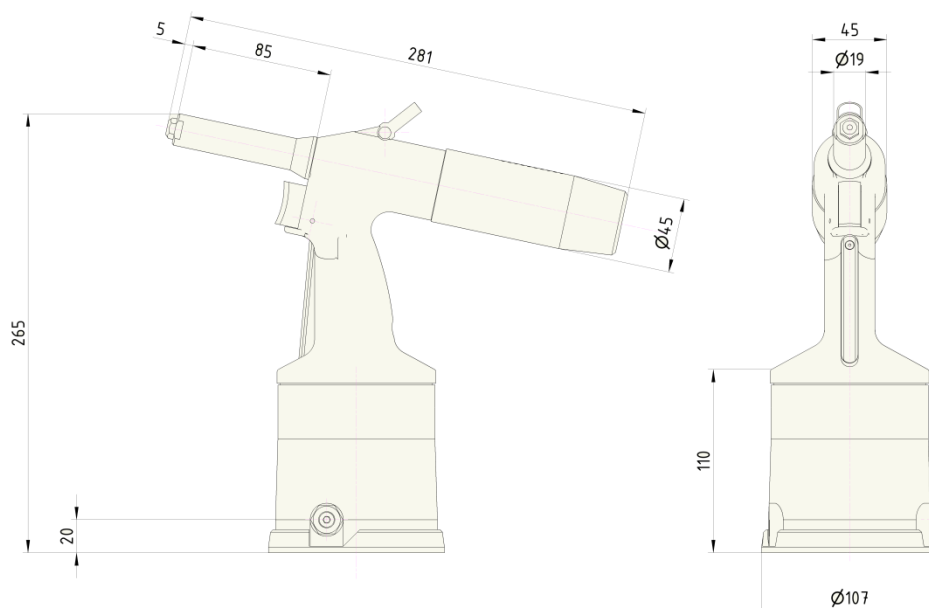
## Description of tools:

- unrivalled output – rate force/weight
- economic automatic exhaustion – activation during clamping
- low noise
- low maintenance demands
- simple operation
- large range of additional equipment
- ergonomic handle – fits into the hand
- low value of transferred vibrations
- rotary joint air connection
- supply of pressured air optional from right or left which can be very easily modified for right or left-hand persons
- removable collecting vessel with adjustable turning of the outflow air from exhaustion
- curtain
- spare nosepieces on the bottom of the tools
- safety closure preventing release of the mandrel when the collecting vessel is removed
- safety over-pressure valve
- reliability verified in practice



supply number: 99-0021

## Dimensions of tools:

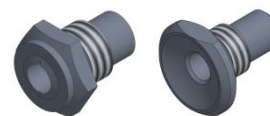
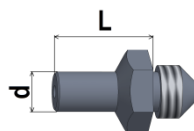


## Standard accessories:

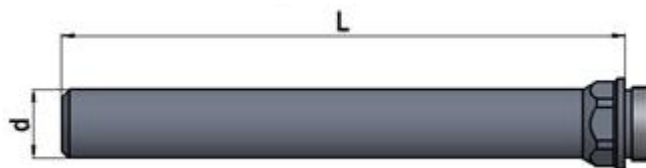
- ⊙ Nosepieces (see table) + necessary wrenches for the replacement of nosepieces
- ⊙ Set for adding oil
- ⊙ Air joint connection + Allen wrench for tightening air connection
- ⊙ User and Maintenance Manual, list of spare parts

## Other optional accessories:

- ⊙ Jaws for stainless rivets
- ⊙ Prolonged nosepieces by 5 mm from L = 10 to 25 mm
- ⊙ Special nosepieces for certain types of rivets, e.g. Bulb-Tite



- ⊙ Prolonged nose Ø d = 19,5 mm with lengths L = 120, 160, 200, 225, 250, 300 mm
- ⊙ Noses with smaller diameter Ø d = 16,4 mm with lengths L = 75, 200 mm



- ⊙ Angular head
- ⊙ Shortened collecting vessel
- ⊙ Collecting vessel with damper
- ⊙ Adapter for removing mandrels by Ø 6 and Ø 10 mm hoses
- ⊙ Inductive sensor for reading of removed rivet mandrels