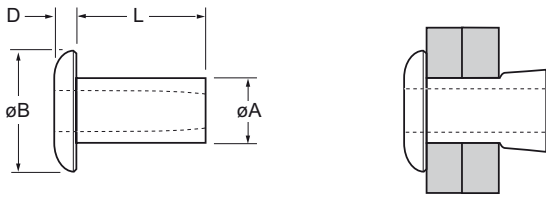







English	Français	Deutsch	Italiano	Español
Dome head	Tête plate	Flachrundkopf	Testa tonda	Cabeza alomada
Low carbon steel*	Acier bas carbone*	Stahl*	Acciaio a basso tenore di carbonio*	Acero bajo en carbono*
Zinc plated	Revêtement zingué	Verzinkt	Zincato	Zincado
Clear trivalent passivated	Passivation claire trivalente	Klar chromatiert, Cr6-frei	Passivazione chiara trivalente	Pasivado claro trivalente

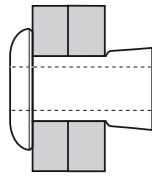
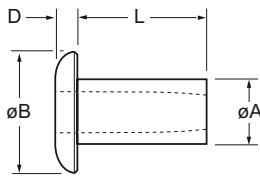
*: SAE 1008 / EN 10263-2 C8C DIN 10263-2 C8C Qst 34-3






ø					øB	D	L	øA		Fasteners per pod Nombre de rivets par chargeur / Niete pro Magazin / Rivetti per caricatore/ Uds./carga	Part No/ref	
	nom.	min.	max.	min.								max.
3.2 (1/8")					5.47	1.12	3.2	3.25	1.42	71	01121-00404	
		0.79	2.36	3.26			3.34			4.0	57	01121-00405
		1.57	3.18							4.8	51	01121-00406
		3.18	4.75							6.4	39	01121-00408
		4.75	6.35							7.9	32	01121-00410
		6.35	7.92							9.5	27	01121-00412
4.0 (5/32")		1.57	3.18		4.09	4.17		6.48	4.8	4.04	2.44	47
		3.18	4.75	6.4			38		01121-00508			
		4.75	6.35	7.9			31		01121-00510			
		6.35	7.92	9.5			27		01121-00512			
		7.92	9.52	11.1			23		01121-00514			
		9.52	11.10	12.7			21		01121-00516			

all dimensions in mm / en millimètres / alle Maße in mm / in millimetri / en milímetros

1) typical values / valeurs moyennes / typische Werte / Valori tipici / valores típicos



ø					øB	D	L	øA		Fasteners per pod Nombre de rivets par chargeur / Niete pro Magazin / Rivetti per caricatore/ Uds./carga ± 1	Part No/ref							
	nom.	min.	max.	min.								max.	max.	max.	nom.	max.	kN ¹⁾	
4.8 (3/16")					4.85	4.93	8.87	1.78	4.85	3.20	50	01121-00605						
		1.57															38	01121-00607
		1.57	3.18															
		3.18	4.75															
		4.75	6.35															
		6.35	7.92															
		7.92	9.52															
		9.52	11.10															
	11.10	12.70																
6.4 (1/4")					6.35	6.43	10.44	2.11	6.35	4.40	32	01121-00809						
		3.18	4.75															
		4.75	6.35															
		6.35	7.92															
		7.92	9.52															
		9.52	11.10															
	11.10	12.70																

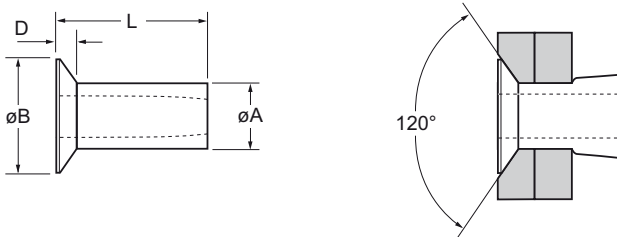
all dimensions in mm / en millimètres / alle Maße in mm / in millimetri / en milímetros




1) typical values / valeurs moyennes / typische Werte / Valori tipici / valores típicos



English	Français	Deutsch	Italiano	Español
Countersunk head	Tête fraisée	Senkkopf	Testa svasata	Cabeza avellanada
Low carbon steel*	Acier bas carbone*	Stahl*	Acciaio a basso tenore di carbonio*	Acero bajo en carbono*
Zinc plated	Revêtement zingué	Verzinkt	Zincato	Zincado
Clear trivalent passivated	Passivation claire trivalente	Klar chromatiert, Cr6-frei	Passivazione chiara trivalente	Pasivado claro trivalente

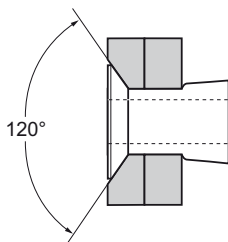
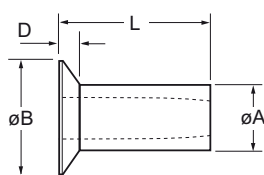
*: BS 3111 Type 0 SAE 1008 DIN 1654 Qst 34-3

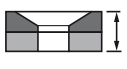
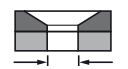
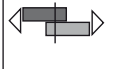


ø					øB	D	L	øA		Fasteners per pod Nombre de rivets par chargeur / Niete pro Magazin/ Rivetti per caricatore/ Uds./carga	Part No/ref
	min.	max.	min.	max.							
3.2 (1/8")	0.91	1.57	3.26	3.34	5.20	0.92	3.4	3.25	1.40	90	01122-00404
	0.91	2.36					4.1			72	01122-00405
	1.57	3.17					4.9			61	01122-00406
	3.17	4.75					6.5			46	01122-00408
	4.75	6.35					8.1			37	01122-00410
	6.35	7.92					9.7			31	01122-00412
4.0 (5/32")	1.57	3.17	4.09	4.17	6.22	0.97	4.9	4.04	2.40	61	01122-00506
	3.17	4.75					6.5			46	01122-00508
	4.75	6.35					8.1			37	01122-00510
	6.35	7.92					9.7			31	01122-00512
	7.92	9.52					11.3			26	01122-00514
	9.52	11.10					12.9			23	01122-00516

all dimensions in mm / en millimètres / alle Maße in mm / in millimetri / en milímetros

1) typical values / valeurs moyennes / typische Werte / Valori tipici / valores típicos



ø					øB	D	L	øA		Fasteners per pod Nombre de rivets par chargeur / Niete pro Magazin/ Rivetti per caricatore/ Uds./carga ± 1	Part No/ref	
	nom.	min.	max.	min.								max.
4.8 (3/16")	1.57	3.17	4.85	4.93	8.61	1.43	5.7	4.85	3.20		52	01122-00607
	3.17	4.75					7.3				41	01122-00609
	4.75	6.35					8.9				33	01122-00611
	6.35	7.92					10.5				28	01122-00613
	7.92	9.52					12.1				25	01122-00615
	9.52	11.10					13.7				22	01122-00617
	11.10	12.70					15.3				19	01122-00619
6.4 (1/4")	6.35	7.92	6.35	6.43	10.19	1.45	10.5	6.35	4.40		28	01122-00813
	7.92	9.52					12.1				25	01122-00815
	9.52	11.10					13.7				22	01122-00817
	11.10	12.70					15.3				19	01122-00819
	12.70	14.27					16.8				18	01122-00821
	14.27	15.87					18.4				16	01122-00823
	15.87	17.45					20.0				15	01122-00825

all dimensions in mm / en millimètres / alle Maße in mm / in millimetri / en milímetros

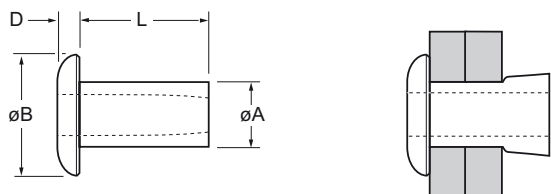
1) typical values / valeurs moyennes / typische Werte / Valori tipici / valores típicos



English	Français	Deutsch	Italiano	Español
Dome head	Tête plate	Flachrundkopf	Testa tonda	Cabeza alomada
Aluminium alloy Natural	Alliage d'aluminium Brut	Aluminium Blank	Lega di alluminio Nessuna finitura	Aluminio Natural

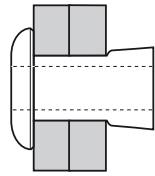
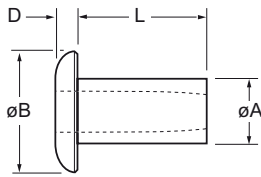
Optional on request / sur demande / auf Anfrage / su richiesta / bajo petición:

For 5 % Mg BS 1473 5056A DIN 1725 AlMg5 Werkstoff 3.3555 Aluminium alloy replace part no. 01125 with 01135 /
pour 5 % Mg BS 1473 5056A DIN 1725 AlMg5 Werkstoff 3.3555 alliage d'aluminium remplacer la série 01125 par 01135 /
für 5 % Mg BS 1473 5056A DIN 1725 AlMg5 Werkstoff 3.3555 Aluminium-Legierung ersetzen Sie 01125 durch 01135 /
per 5 % Mg BS 1473 5056A DIN 1725 AlMg5 Werkstoff 3.3555 lega di alluminio sostituire 01125 con 01135 /
para 5 % Mg BS 1473 5056A DIN 1725 AlMg5 Werkstoff 3.3555 Aluminio cambiar 01125 por 01135



ø	øB		D		L	øA	Fasteners per pod Nombre de rivets par chargeur / Niete pro Magazin / Rivetti per caricatore / Uds./carga	Aluminium			
	min.	max.	min.	max.				2.5 % Mg AA 5052 DIN 1725 AlMg2.5 Werkstoff 3.3523	3.5 % Mg BS 1473 5154A DIN 1725 AlMg3.5 Werkstoff 3.3535		
nom.	min.	max.	min.	max.	max.	± 0.18	± 1	Part No/ref	Part No/ref		
2.4 (3/32")		1.57	2.49	2.55	4.14	0.94	2.48	73	01125-00304	01131-00304	
		1.57						3.17	52	01125-00306	01131-00306
		3.17						4.75	41	01125-00308	01131-00308
		4.75						6.35	33	01125-00310	01131-00310
		6.35						7.92	28		01131-00312
		7.92						9.52	24		01131-00314
		9.52						11.10	22		01131-00316
3.2 (1/8")		0.00	3.26	3.34	5.52	1.15	3.25	71	01125-00404	01131-00404	
		1.57						3.17	51	01125-00406	01131-00406
		3.17						4.75	39	01125-00408	01131-00408
		4.75						6.35	32	01125-00410	01131-00410
		6.35						7.92	27	01125-00412	01131-00412
		7.92						9.52	23	01125-00414	
4.0 (5/32")		1.57	4.09	4.17	6.53	1.48	4.06	47	01125-00506	01131-00506	
		3.17						4.75	38	01125-00508	01131-00508
		4.75						6.35	31	01125-00510	01131-00510
		6.35						7.92	27	01125-00512	01131-00512
		7.92						9.52	23	01125-00514	01131-00514
		9.52						11.10	21	01125-00516	01131-00516
		11.10						12.70		01125-00518	01131-00518
		12.70						14.27		01125-00520	01131-00520

all dimensions in mm / en millimètres / alle Maße in mm / in millimetri / en milímetros



ø	Ø		Ø		øB	D	L	øA	Fasteners per pod Nombre de rivets par chargeur / Niete pro Magazin / Rivetti per caricatore / Uds./carga ± 1	Aluminium	
	min.	max.	min.	max.						max.	max.
nom.	min.	max.	min.	max.	max.	max.	± 0.18	max.	± 1	Part No/ref	Part No/ref
4.8 (3/16")		1.57	4.85	4.93	8.92	1.81	3.96	4.82	50		01131-00605
	1.57	3.17					5.56		38	01125-00607	01131-00607
	3.17	4.75					7.14		33	01125-00609	01131-00609
	4.75	6.35					8.74		28	01125-00611	01131-00611
	6.35	7.92					10.31		24	01125-00613	01131-00613
	7.92	9.52					11.91		21	01125-00615	01131-00615
	9.52	11.10					13.49		19	01125-00617	01131-00617
	11.10	12.70					15.09		17	01125-00619	01131-00619
6.4 (1/4")	3.17	4.75	6.35	6.43	10.49	2.14	7.14	6.32	32		01131-00809
	4.75	6.35					8.74		27		01131-00811
	6.35	7.92					10.31		24		01131-00813
	7.92	9.52					11.91		21		01131-00815
	9.52	11.10					13.49		19		01131-00817
	11.10	12.70					15.09		17		01131-00819
	12.70	14.27					16.66		16		01131-00821
	14.27	15.87					18.26		14		01131-00823
	15.87	17.45					19.84		13		01131-00825

all dimensions in mm / en millimètres / alle Maße in mm / in millimetri / en milímetros

ø	Ø	
	1125 Series kN ¹⁾	1131 Series kN ¹⁾
2.4 mm (3/32")	0.30	0.50
3.2 mm (1/8")	0.60	0.80
4.0 mm (5/32")	1.00	1.60
4.8 mm (3/16")	1.50	2.00
6.4mm (1/4")		2.70

1) typical values / valeurs moyennes / typische Werte /
Valori tipici / valores típicos



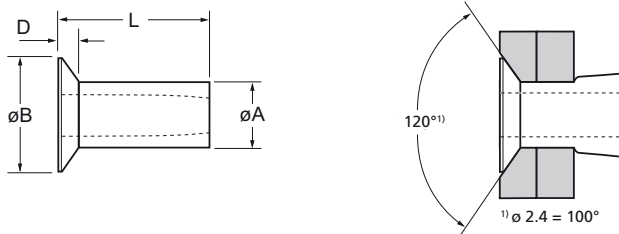
English	Français	Deutsch	Italiano	Español
Countersunk head	Tête fraisée	Senkkopf	Testa svasata	Cabeza avellanada
Aluminium alloy* Natural	Alliage d'aluminium* Brut	Aluminium* Blank	Lega di alluminio* Nessuna finitura	Aluminio* Natural

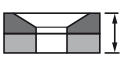
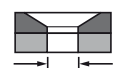
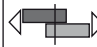
*: 3.5 % Mg BS 1473 5154A DIN 1725 Werkstoff 3.3535

Optional on request / sur demande / auf Anfrage / su richiesta / bajo petición:

For 2.5 % Mg AA 5052 DIN 1725 AlMg2.5 Werkstoff 3.3523 Aluminium alloy replace part no. 01132 with 01124 /
pour 2.5 % Mg AA 5052 DIN 1725 AlMg2.5 Werkstoff 3.3523 alliage d'aluminium remplacer la série 01132 par 01124 /
für 2.5 % Mg AA 5052 DIN 1725 AlMg2.5 Werkstoff 3.3523 Aluminium-Legierung ersetzen Sie 01132 durch 01124 /
per 2.5 % Mg AA 5052 DIN 1725 AlMg2.5 Werkstoff 3.3523 lega di alluminio sostituire 01132 con 01124 /
para 2.5 % Mg AA 5052 DIN 1725 AlMg2.5 Werkstoff 3.3523 Aluminio cambiar 01132 por 01124

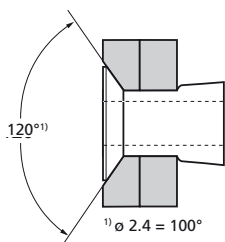
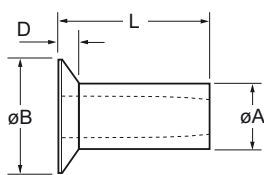
For 5 % Mg BS 1473 5056A DIN 1725 AlMg5 Werkstoff 3.3555 Aluminium alloy replace part no. 01132 with 01136 /
pour 5 % Mg BS 1473 5056A DIN 1725 AlMg5 Werkstoff 3.3555 alliage d'aluminium remplacer la série 01132 par 01136 /
für 5 % Mg BS 1473 5056A DIN 1725 AlMg5 Werkstoff 3.3555 Aluminium-Legierung ersetzen Sie 01132 durch 01136 /
per 5 % Mg BS 1473 5056A DIN 1725 AlMg5 Werkstoff 3.3555 lega di alluminio sostituire 01132 con 01136 /
para 5 % Mg BS 1473 5056A DIN 1725 AlMg5 Werkstoff 3.3555 Aluminio cambiar 01132 por 01136

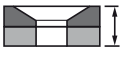
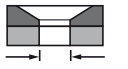



ø					øB	D	L	øA		Fasteners per pod Nombre de rivets par chargeur / Niete pro Magazin / Rivetti per caricatore / Uds./carga	Part No/ref			
	nom.	min.	max.	min.								max.	min.	max.
2.4 (3/32")					4.16	0.89	3.31	2.46	0.50	90	01132-00304			
		1.57	3.17	2.49			2.55					4.88	61	01132-00306
		3.17	4.75									6.48	46	01132-00308
		4.75	6.35									8.06	37	01132-00310
		6.35	7.92									9.66	31	01132-00312
3.2 (1/8")					5.20	0.92	3.31	3.25	0.90	90	01132-00404			
		1.57	3.17	3.26			3.34					4.88	61	01132-00406
		3.17	4.75									6.48	46	01132-00408
		4.75	6.35									8.06	37	01132-00410
		6.35	7.92									9.66	31	01132-00412
4.0 (5/32")					6.22	0.97	4.88	4.04	1.60	61	01132-00506			
		3.17	4.75	4.09			4.17					6.48	46	01132-00508
		4.75	6.35									8.06	37	01132-00510
		6.35	7.92									9.66	31	01132-00512
		7.92	9.52									11.23	26	01132-00514
		9.52	11.10									12.83	23	01132-00516

all dimensions in mm / en millimètres / alle Maße in mm / in millimetri / en milímetros

1) typical values / valeurs moyennes / typische Werte / Valori tipici / valores típicos



ø					øB	D	L	øA		Fasteners per pod Nombre de rivets par chargeur / Niete pro Magazin / Rivetti per caricatore / Uds./carga	Part No/ref		
	nom.	min.	max.	min.								max.	min.
4.8 (3/16")	1.57	3.17	4.85	4.93	8.61	1.43	5.69	4.80	2.00	52	01132-00607		
	3.17	4.75					7.27					41	01132-00609
	4.75	6.35					8.87					33	01132-00611
	6.35	7.92					10.44					28	01132-00613
	7.92	9.52					12.04					25	01132-00615
	9.52	11.10					13.62					22	01132-00617
	11.10	12.70					15.22					19	01132-00619
6.4 (1/4")	3.17	4.75	6.35	6.43	10.19	1.45	7.27	6.30	2.70	41	01132-00809		
	4.75	6.35					8.87					33	01132-00811
	6.35	7.92					10.44					28	01132-00813
	7.92	9.52					12.04					25	01132-00815
	9.52	11.10					13.62					22	01132-00817
	11.10	12.70					15.22					19	01132-00819

all dimensions in mm / en millimètres / alle Maße in mm / in millimetri / en milímetros

1) typical values / valeurs moyennes / typische Werte / Valori tipici / valores típicos

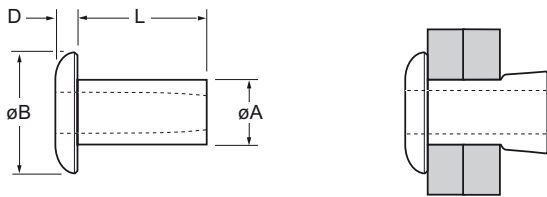





English	Français	Deutsch	Italiano	Español
Dome head	Tête plate	Flachrundkopf	Testa tonda	Cabeza alomada
Brass*	Laiton*	Kupfer-Zink-Legierung*	Ottone*	Latón*
Electro tin plated**	Etamage électrolytique**	verzinkt**	Stagnato**	Estañado electrolítico**

*: EN 12166 CW 508L DIN 17660 CuZn37

** : We recommend tin plated parts 1143 and 1144 Series are installed within 9 months from the date they were produced.
 Nous conseillons d'utiliser les pièces en laiton étamé du séries 1143 et 1144 sous un délai de 9 mois après la date de production.
 Wir empfehlen, verzinnte Niete der Serien 1143 und 1144 innerhalb 9 Monaten nach Produktionsdatum zu verarbeiten.
 Raccomandare di utilizzare i prodotti stagnati serie 1143 e 1144 entro 9 mesi a decorrere dalla data di fabbricazione.
 Recomendamos utilizar sus piezas estañadas serie 1143 y 1144 antes de 9 meses desde la fecha de su fabricación.

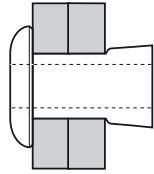
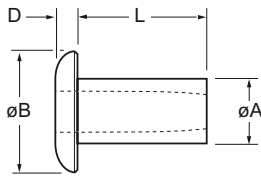
Options on request - see next page / Option sur demande - voir page suivant / Optionen auf Anfrage - siehe nächste Seite /
 Opzioni su richiesta - vedi pagina successiva / Opciones bajo petición - ver la página siguiente






ø					øB	D	L	øA		Fasteners per pod Nombre de rivets par chargeur / Niete pro Magazin / Rivetti per caricatore / Uds./carga	Part No/ref			
	nom.	min.	max.	min.								max.	max.	max.
2.4 (3/32")					4.09	0.92	3.17	2.47	0.60	73	01143-00304			
		1.57	3.17	2.49			2.55					4.75	52	01143-00306
		3.17	4.75									6.35	41	01143-00308
		4.75	6.35									7.92	33	01143-00310
		6.35	7.92									9.52	28	01143-00312
3.2 (1/8")					5.46	1.12	3.17	3.25	1.10	71	01143-00404			
		1.57	3.17	3.26			3.34					4.75	51	01143-00406
		3.17	4.75									6.35	39	01143-00408
		4.75	6.35									7.92	32	01143-00410
4.0 (5/32")					6.47	1.45	4.75	4.04	1.80	47	01143-00506			
		1.57	3.17	4.09			4.17					6.35	38	01143-00508
		3.17	4.75									7.92	31	01143-00510
		4.75	6.35									9.52	27	01143-00512
		6.35	7.92									11.10	23	01143-00514
		7.92	9.52									12.70	21	01143-00516

all dimensions in mm / en millimètres / alle Maße in mm / in millimetri / en milímetros

1) typical values / valeurs moyennes / typische Werte / Valori tipici / valores típicos



ø					øB	D	L	øA		Fasteners per pod Nombre de rivets par chargeur / Niete pro Magazin / Rivetti per caricatore / Uds./carga	Part No/ref
	nom.	min.	max.	min.							
4.8 (3/16")	1.57	3.17	4.85	4.93	8.86	1.78	5.56	4.85	2.50	± 1	01143-00607
	3.17	4.75					38			01143-00609	
	4.75	6.35					28			01143-00611	
	6.35	7.92					24			01143-00613	
	7.92	9.52					21			01143-00615	
	9.52	11.10					19			01143-00617	

all dimensions in mm / en millimètres / alle Maße in mm / in millimetri / en milímetros

1) typical values / valeurs moyennes / typische Werte / Valori tipici / valores típicos

Optional on request / sur demande / auf Anfrage / su richiesta / bajo petición:

Dome head bright Brass: replace part no. 01143 with 01141. Details on request.

Tête plate Laiton brillante: remplacer la série 01143 par 01141. Détails sur demande.

Flachrundkopf Kupfer-Zink-Legierung blank: ersetzen Sie 01143 durch 01141. Details auf Anfrage.

Testa tonda Ottone brillante: sostituire 01143 con 01141. Dettagli su richiesta.

Cabeza alomada Latón brillante: cambiar 01143 por 01141. Más información bajo petición.

Dome head nickel plated Brass: replace part no. 01143 with 01147. Details on request.

Tête plate Laiton nickelé: remplacer la série 01143 par 01147. Détails sur demande.

Flachrundkopf Kupfer-Zink-Legierung vernickelt: ersetzen Sie 01143 durch 01147. Details auf Anfrage.

Testa tonda Ottone nichelato: sostituire 01143 con 01147. Dettagli su richiesta.

Cabeza alomada Latón niquelado: cambiar 01143 por 01147. Más información bajo petición.

Countersunk head bright Brass: replace part no. 01143 with 01142. Details on request.

Tête fraisée Laiton brillante: remplacer la série 01143 par 01142. Détails sur demande.

Senkkopf Kupfer-Zink-Legierung blank: ersetzen Sie 01143 durch 01142. Details auf Anfrage.

Testa svasata Ottone brillante: sostituire 01143 con 01142. Dettagli su richiesta.

Cabeza avellanada Latón brillante: cambiar 01143 por 01142. Más información bajo petición.

Countersunk head electro tin plated Brass**: replace part no. 01143 with 01144. Details on request.

Tête fraisée Laiton étamage électrolytique**: remplacer la série 01143 par 01144. Détails sur demande.

Senkkopf Kupfer-Zink-Legierung verzinkt**: ersetzen Sie 01143 durch 01144. Details auf Anfrage.

Testa svasata Ottone stagnato**: sostituire 01143 con 01144. Dettagli su richiesta.

Cabeza avellanada Latón estañado electrolítico**: cambiar 01143 por 01144. Más información bajo petición.

Countersunk head nickel plated Brass: replace part no. 01143 with 01148. Details on request.

Tête fraisée Laiton nickelé: remplacer la série 01143 par 01148. Détails sur demande.

Senkkopf Kupfer-Zink-Legierung vernickelt: ersetzen Sie 01143 durch 01148. Details auf Anfrage.

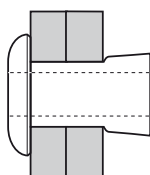
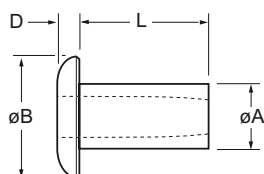
Testa svasata Ottone nichelato: sostituire 01143 con 01148. Dettagli su richiesta.




Cabeza avellanada Latón niquelado: cambiar 01143 por 01148. Más información bajo petición.



English	Français	Deutsch	Italiano	Español
Low profile head	Tête profil bas	Flachkopf	Testa basso profilo	Cabeza perfil bajo
Aluminium alloy* (2.5 % Mg)	Alliage d'aluminium* (2.5% Mg)	Aluminium* (2.5 % Mg)	Lega di alluminio* (2.5% Mg)	Aluminio* (2.5% Mg)
Natural	Brut	Blank	Nessuna finitura	Natural

*: AA 5052 DIN 1725 AlMg2.5 Werkstoff 3.3523



ø					øB	D	L	øA		Fasteners per pod Nombre de rivets par chargeur / Niete pro Magazin/ Rivetti per caricatore/ Uds./carga	Part No/ref	
	min.	max.	min.	max.								max.
3.2 (1/8")		1.57	3.26	3.34	6.66	1.05	3.46	3.24	0.60		71	01162-00404
	1.57	3.17					5.06				51	01162-00406
	3.17	4.75					6.63				39	01162-00408
	4.75	6.35					8.23				32	01162-00410
	6.35	7.92					9.81				27	01162-00412
	7.92	9.52					11.38				23	01162-00414
	9.52	11.10					12.96				21	01162-00416
	4.0 (5/32)	1.57					3.17				4.09	4.17
2.36		3.93	5.64		01162-00507							
3.17		4.75	6.46	38	01162-00508							
4.75		6.35	8.03	31	01162-00510							
6.35		7.92	9.63	27	01162-00512							
7.92		9.52	11.21	23	01162-00514							
9.52		11.10	12.81	21	01162-00516							
4.8 (3/16")		1.57	4.85	4.93	10.06	1.55	4.55	4.82	1.50		50	01162-00605
	1.57	3.17					5.85				38	01162-00607
	3.17	4.75					7.42				33	01162-00609
	4.75	6.35					9.02				28	01162-00611
	6.35	7.92					10.60				24	01162-00613
	7.92	9.52					12.20				21	01162-00615
	9.52	11.10					13.77				19	01162-00617
	11.10	12.70					15.37				17	01162-00619

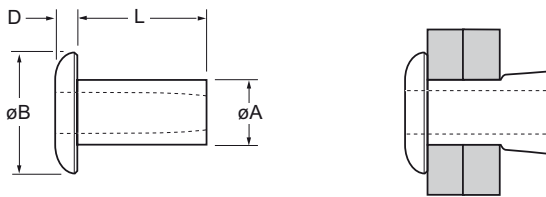
all dimensions in mm / en millimètres / alle Maße in mm / in millimetri / en milímetros



1) typical values / valeurs moyennes / typische Werte / Valori tipici / valores típicos



English	Français	Deutsch	Italiano	Español
Dome head	Tête plate	Flachrundkopf	Testa tonda	Cabeza alomada
Aluminium alloy* (2.5 % Mg)	Alliage d'aluminium* (2.5% Mg)	Aluminium* (2.5 % Mg)	Lega di alluminio* (2.5% Mg)	Aluminio* (2.5% Mg)
Natural	Brut	Blank	Nessuna finitura	Natural

*: AA 5052 DIN 1725 AlMg2.5 Werkstoff 3.3523



ø				øB	D	L	øA	Fasteners per pod Nombre de rivets par chargeur / Niete pro Magazin/ Rivetti per caricatore/ Uds./carga	Part No/ref	
	nom.	min.								max.
3.2 under- sized ²⁾ (1/8")			3.05	5.12	1.15	3.18	3.01	71	01164-00404	
		1.60				3.17		4.75	51	01164-00406
		3.17				4.77		6.35	39	01164-00408
		4.77				6.35		7.92	32	01164-00410
		6.35				7.92		9.52	27	01164-00412
		7.92				9.50		11.10	23	01164-00414
		9.50				11.07		12.70	21	01164-00416

all dimensions in mm / en millimètres / alle Maße in mm / in millimetri / en milímetros

1) typical values / valeurs moyennes / typische Werte / Valori tipici / valores típicos

2) undersized / dimension inférieure / Untermaß / misura inferiore / dimensión inferior