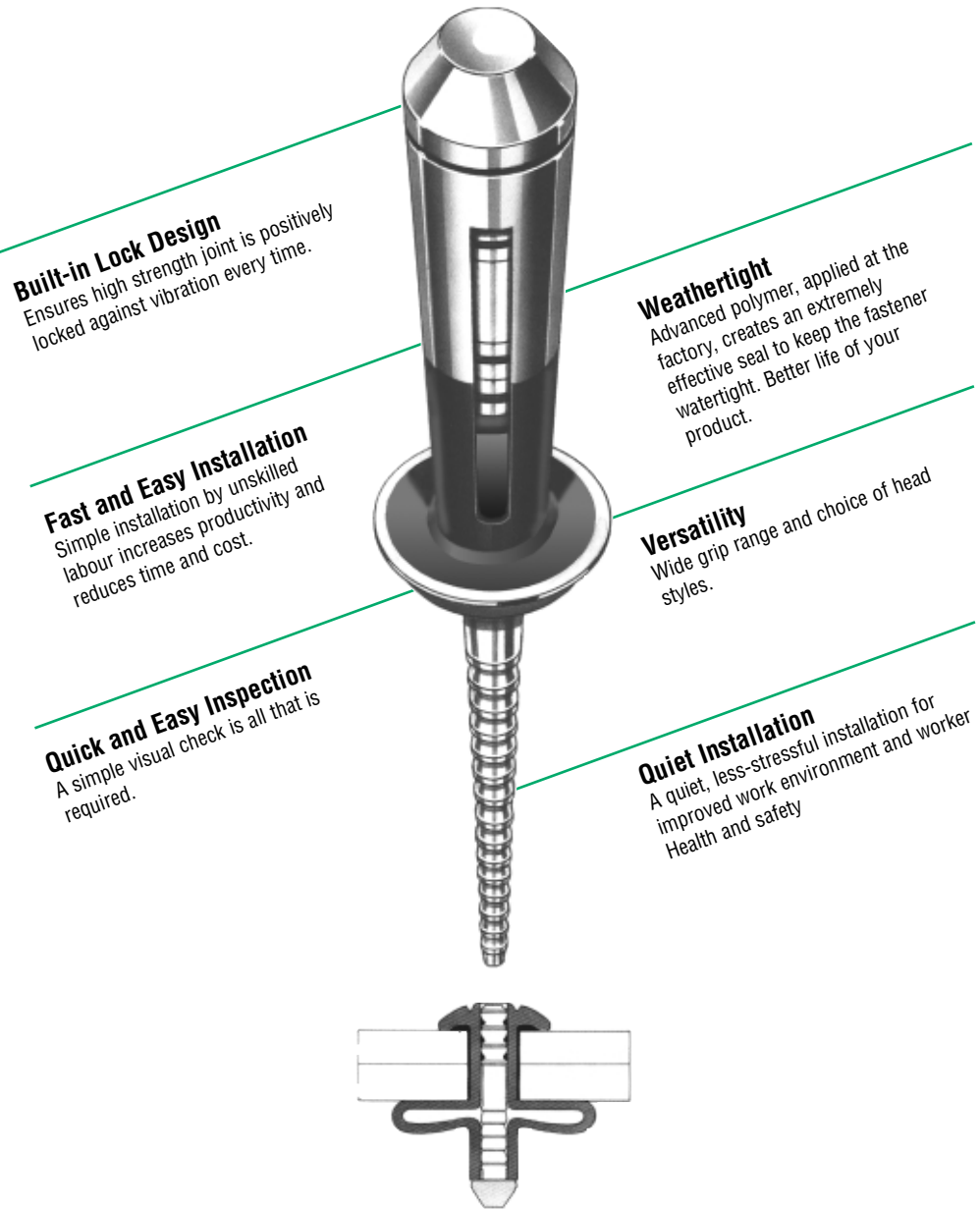


Magna-Tite® Blind Fastener

A blind high strength fastener with an advanced watertight seal, a large blind side footprint and a wide grip range, providing a strong joint with high resistance to vibration. Available in 4.8mm (3/16") diameter with a range of head styles to suit the application.



Built-in Lock Design
Ensures high strength joint is positively locked against vibration every time.

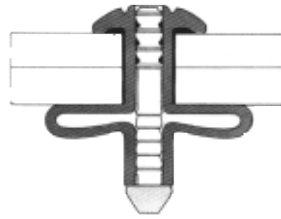
Weathertight
Advanced polymer, applied at the factory, creates an extremely effective seal to keep the fastener watertight. Better life of your product.

Fast and Easy Installation
Simple installation by unskilled labour increases productivity and reduces time and cost.

Versatility
Wide grip range and choice of head styles.

Quick and Easy Inspection
A simple visual check is all that is required.

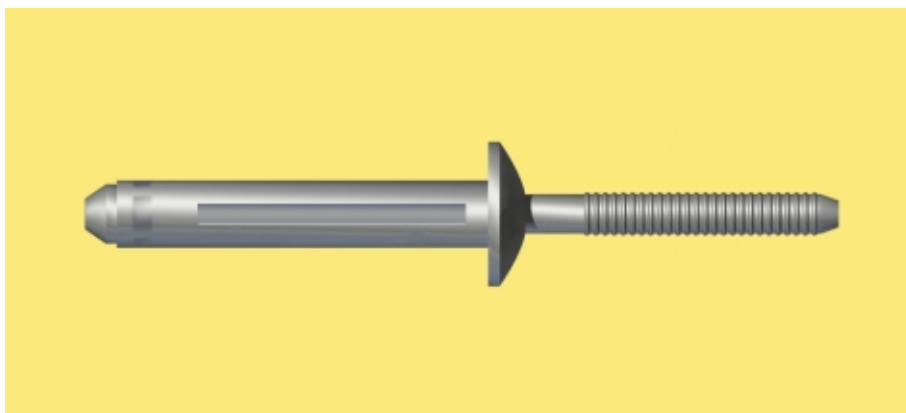
Quiet Installation
A quiet, less-stressful installation for improved work environment and worker health and safety



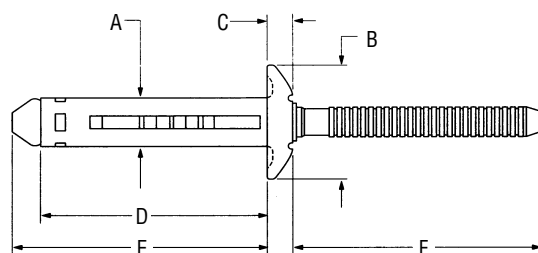
APPLICATIONS

- Roofing and cladding
 - Caravans
- Commercial vehicles
- Sheet metal fabrication

Magna-Tite® Blind Fastener

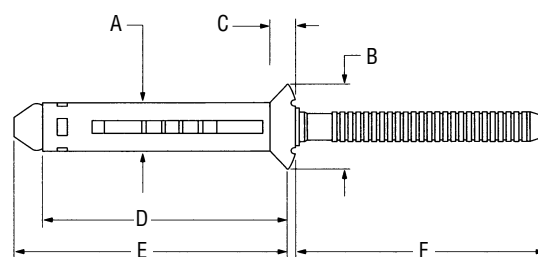


Fastener Specifications



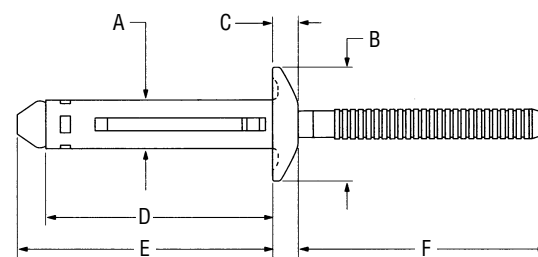
Protruding Head

Dia.	Grip Range	Part No.	Hole Size	A nom	B nom	C nom	D max	E max	F min
4.8	1.27 - 7.92	MTP-B6-5S	5.21 - 5.61	5.05	11.51	2.97	22.61	25.91	23.88
	2.54 - 9.53	MTP-B6-6S	5.21 - 5.61	5.05	11.51	2.97	23.88	27.18	23.88
	6.35 - 12.70	MTP-B6-8S	5.21 - 5.61	5.05	11.51	2.97	27.69	30.99	23.88
	9.53 - 15.88	MTP-B6-10S	5.21 - 5.61	5.05	11.51	2.97	30.86	34.16	23.88
	12.70 - 19.05	MTP-B6-12S	5.21 - 5.61	5.05	11.51	2.97	34.04	37.34	23.88



100% Oval Head

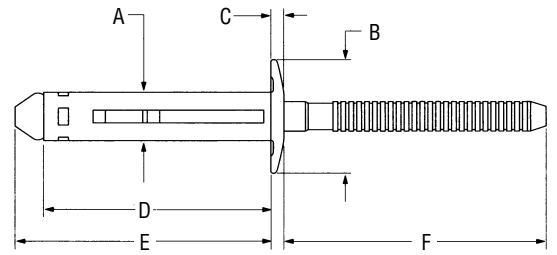
Dia.	Grip Range	Part No.	Hole Size	A nom	B nom	C nom	D max	E max	F min
4.8	1.78 - 7.92	MTV-B6-5S	5.21 - 5.61	5.05	9.02	2.97	23.11	26.42	23.88
	4.06 - 10.41	MTV-B6-7S	5.21 - 5.61	5.05	9.02	2.97	25.65	28.96	23.88
	6.35 - 12.70	MTV-B6-8S	5.21 - 5.61	5.05	9.02	2.97	27.69	30.99	23.88
	9.53 - 15.88	MTV-B6-10S	5.21 - 5.61	5.05	9.02	2.97	30.86	34.16	23.88
	12.70 - 19.05	MTV-B6-12S	5.21 - 5.61	5.05	9.02	2.97	34.04	37.34	23.88



Shavable Head

Dia.	Grip Range	Part No.	Hole Size	A nom	B nom	C nom	D max	E max	F min
4.8	1.27 - 12.70	MTS-B6-8S	5.21 - 5.61	5.05	11.51	2.97	25.65	28.96	23.88
	1.27 - 19.05	MTS-B6-12S	5.21 - 5.61	5.05	11.51	2.97	32.00	35.31	23.88

Magna-Tite® Blind Fastener



Low Profile Head

Dia.	Grip Range	Part No.	Hole Size	A nom	B nom	C nom	D max	E max	F min
4.8	1.27 - 6.35	MTLP-B6-4	5.21 - 5.61	5.05	11.00	1.32	21.34	26.42	23.88
	4.75 - 12.70	MTLP-B6-8	5.21 - 5.61	5.05	11.00	1.32	27.69	28.96	23.88
	9.53 - 19.05	MTLP-B6-12	5.21 - 5.61	5.05	11.00	1.32	32.00	35.31	23.88
	1.27 - 19.05	MTLP-B6-12X	5.21 - 5.61	5.05	11.00	1.32	32.00	35.31	23.88

Typical Installed Values in grip=diameter (N)

Material	Diameter	Shear	Tensile	Pin Retention
Aluminium	4.8	2891	2002	445
Aluminium	4.8 MTLP (above min. grip)	1557	2002	445

How to Order

To order Magna-Bulb fasteners, specify the part number from the Fastener Specifications table above.

Magna-Tite® Installation Tooling

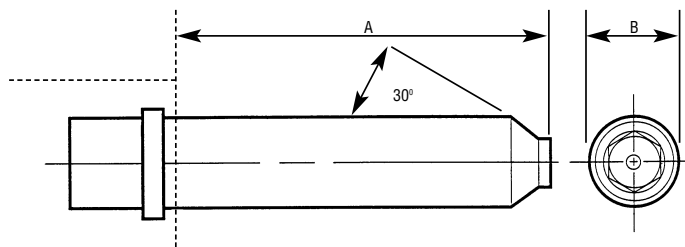
Huck Installation Tools

Huck installation tools consist of a nose assembly and a tool. The choice of tool and nose assembly is determined by the fastener diameter and application.

Tools and nose assemblies are easily changed as installation requirements demand. Huck offers pneumatic and hydraulic installation tools.

Pneumatic tools operate on 6.2-6.9 bar (90-100 psi) air pressure.

The lighter weight hydraulic tools operate on hydraulic power supplied by a Huck POWERIG® Hydraulic Unit.



Code	Diameter	Anvil Insert	Head	Nose Ass.	A mm	B mm	Pneumatic Tooling	Hydraulic Tooling
6	4.8 mm (3/16")	125180-062	P	-	-	-	2015 ¹	
	-	-	-	99-3310F	56.9	19.0	2025 / 2025Y / LH-224	2480
	-	-	-	99-3310P	57.7	19.0	2025 / 2025Y / LH-224	2480
	-	-	-	99-3311B	159.3	19.0	2025 / 2025Y / LH-224	2480
	-	-	-	99-3311F	158.3	19.0	2025 / 2025Y / LH-224	2480
8	6.4 mm (1/4")	-	-	99-3311P	159.3	19.0	2025 / 2025Y / LH-224	2480
		-	-	99-3312F	57.7	19.0	2025 / 2025Y / LH-224	2480
		-	-	99-3312P	57.7	19.0	2025 / 2025Y / LH-224	2480
		-	-	99-3313F	158.5	19.0	2025 / 2025Y / LH-224	2480
		-	-	99-3313P	159.3	19.0	2025 / 2025Y / LH-224	2480

F = Flat/Shavable Head Style

P = Protruding Head Style

Suffixes after Nose Assembly numbers:

F = For installing Flat/Shavable Head, P = For installing Protruding Head

Items in **bold** are part of our FOCUS Tooling Range

Note: Other tool and nose assembly combinations may be available for specific applications. Please contact Huck for details.