

Hucktainer® Lockbolt

A fastener specifically designed for the commercial vehicle body building industry where G.R.P. (glass reinforced plastic) boards are used. This fastener covers a wide grip range, is T.I.R. approved, gives improved security to commercial vehicles and has excellent cosmetic appearance qualities.

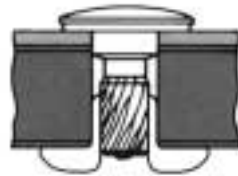
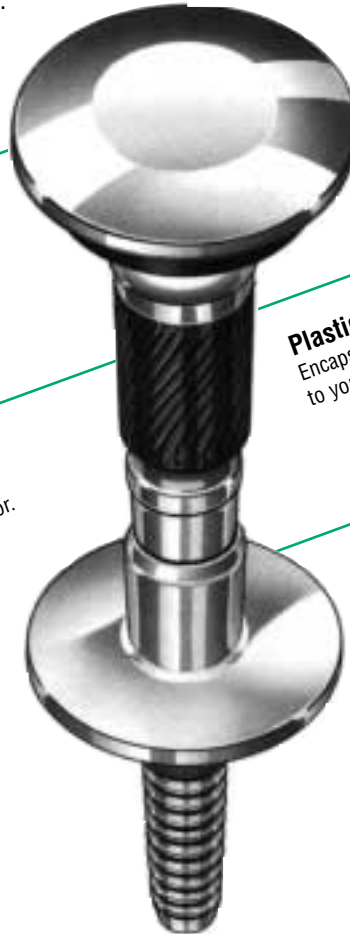
High Uniform Installed Values

Gives the uniform clamp required every time without dimpling side panels.

Fast And Easy Installation
Does not require highly skilled labour, reduces rework and error.

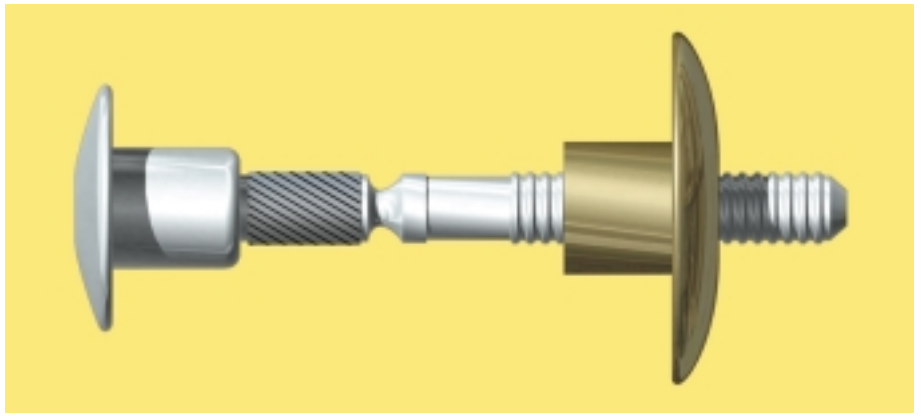
Plastic Coloured Heads (Optional)
Encapsulated heads can be colour co-ordinated to your side panel colouring.

Low Profile Head Design
Does not bulge or protrude, gives good "cosmetic" appearance to vehicles.

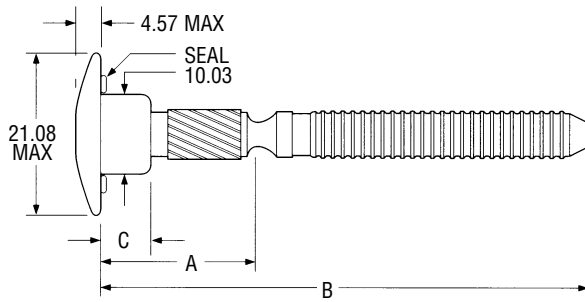


APPLICATIONS

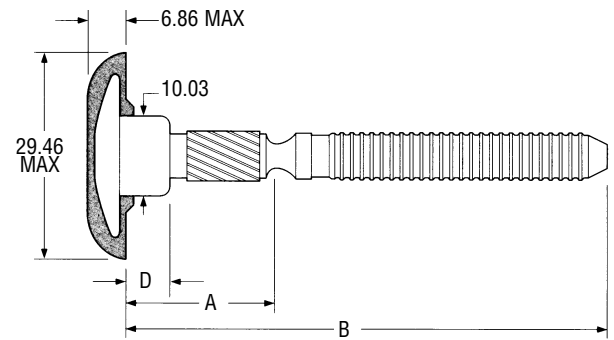
- Commercial vehicle body building.
- Suitable for use on rubber swing doors and in the construction of G.R.P. board type products.



Standard low profile head



Plastic encapsulated head



| Part No. Standard | Part No. Encapsulated | Grip range* min - max | A +0.0-0.25 | B +1.52-0.0 | C | D |
|-------------------|-----------------------|-----------------------|-------------|-------------|-------|-------|
| HLPP-R12-10 | HLPE(**)-R12-10 | 14.27 - 17.48 | 15.85 | 56.69 | 2.54 | 0.97 |
| HLPP-R12-11 | HLPE(**)-R12-11 | 15.88 - 19.05 | 17.45 | 58.29 | 4.01 | 2.44 |
| HLPP-R12-12 | HLPE(**)-R12-12 | 17.45 - 20.62 | 19.02 | 59.87 | 5.59 | 4.01 |
| HLPP-R12-13 | HLPE(**)-R12-13 | 19.05 - 22.23 | 20.62 | 61.47 | 7.16 | 5.59 |
| HLPP-R12-14 | HLPE(**)-R12-14 | 20.62 - 23.80 | 22.20 | 63.04 | 8.76 | 7.19 |
| HLPP-R12-15 | HLPE(**)-R12-15 | 22.23 - 25.40 | 23.80 | 64.64 | 10.36 | 8.79 |
| HLPP-R12-16 | HLPE(**)-R12-16 | 23.80 - 26.97 | 25.37 | 66.22 | 11.94 | 10.36 |
| HLPP-R12-17 | HLPE(**)-R12-17 | 25.40 - 28.58 | 26.97 | 67.82 | 13.51 | 11.94 |
| HLPP-R12-18 | HLPE(**)-R12-18 | 26.97 - 30.15 | 28.55 | 69.39 | 15.11 | 13.54 |
| HLPP-R12-19 | HLPE(**)-R12-19 | 28.58 - 31.75 | 30.15 | 70.99 | 16.71 | 15.14 |
| HLPP-R12-20 | HLPE(**)-R12-20 | 30.15 - 33.32 | 31.72 | 72.57 | 18.29 | 16.71 |
| HLPP-R12-21 | HLPE(**)-R12-21 | 31.75 - 34.93 | 33.32 | 74.17 | 19.86 | 18.29 |
| HLPP-R12-22 | HLPE(**)-R12-22 | 33.32 - 36.50 | 34.90 | 75.74 | 19.86 | 18.29 |

*Other grip ranges are available. Please call your Huck representative.
**Add encapsulated colour: W = white, G = grey, Y = yellow. Consult Huck for other colours.

Typical Installed Tensile in Nominal Grip (N)

| Diameter | Tensile |
|----------|----------|
| 10.03 | 6670 typ |

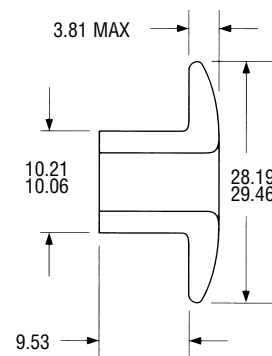
Materials and Finishes

| | Material | Finish |
|--------|----------|----------------------------|
| Sleeve | Steel | Zinc Plated Gold Chromate |
| Pin | Steel | Zinc Plated Clear Chromate |

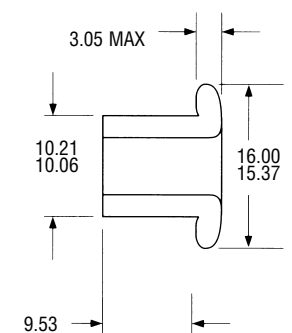
Recommended Hole Size

| Diameter | Hole Size |
|----------|---------------|
| 10.03 | 10.29 - 10.69 |

Wide bearing sleeve HLPS-R12

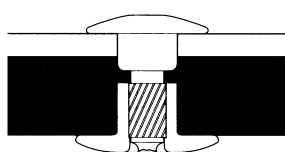


Clearance sleeve¹ HLPSC-R12

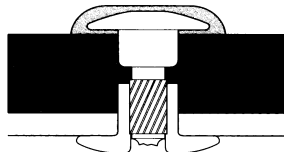


¹ Clearance sleeves are for use against metal structure only.

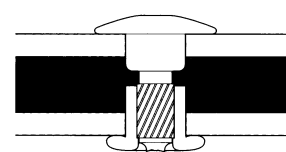
Recommended Installation Configurations



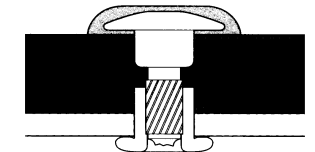
HLPP-R12-() & HLPS-R12



HLPE(**)-R12-() & HLPS-R12



HLPP-R12-() & HLPSC-R12



HLPE(**)-R12-() & HLPSC-R12

Aluminium, Steel, Etc.

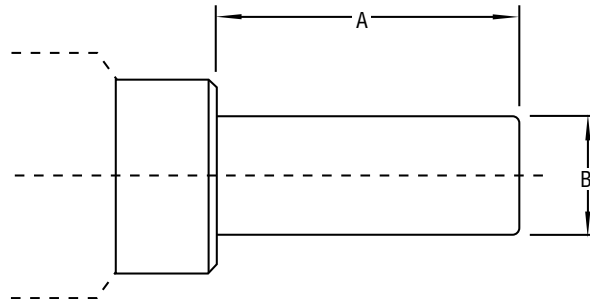
FRP or other clamp sensitive material

Hucktainer® Lockbolt Installation Tooling

Huck Installation Tools

Huck installation tools consist of a nose assembly and a tool. The choice of tool and nose assembly is determined by the fastener diameter and application.

Tools and nose assemblies are easily changed as installation requirements demand. Huck offers pneumatic and hydraulic installation tools. Pneumatic tools operate on 6.2-6.9 bar (90-100 psi) air pressure. The lighter weight hydraulic tools operate on hydraulic power supplied by a Huck POWERIG® Hydraulic Unit.

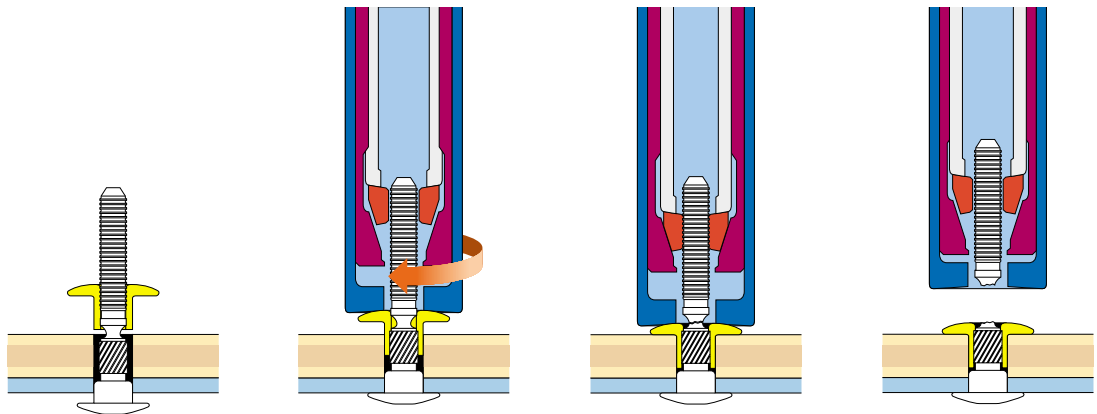


| Nose Ass. | A mm | B mm | Pneumatic Tooling | Hydraulic Tooling |
|-----------------|-----------------|----------------|-------------------------------------|---------------------------|
| 99-3464 | 77.7 (3.1/16") | 28.2 (1.11") | 2025 | 2480 |
| 99-3464L | 77.7 (3.1/16") | 28.2 (1.11") | 2025L | 2480L |
| 99-3438 | 68.9 (2.23/32") | 27.7 (1.3/32") | 245 / 246 / 255 / 256 | 2503 / 2580 |

Items in **bold** are part of our FOCUS Tooling Range

Note: Other tool and nose assembly combinations may be available for specific applications. Please contact Huck for details.

Installation Sequence



[Click Here to view animation of installation sequence](#)