

A two piece grade 10.9 fastening system providing the high performance of lockbolt technology with the manufacturing flexibility of threaded fasteners. The computer controlled installation tooling removes the chance of human error on over or under tightening whilst providing SPC Quality Control and preventative maintenance data. Available in 12mm, 14 mm, 16mm and 20mm diameters.

Fast Installation
Upto 50% faster than installing nuts and bolts with impact wrenches.

Simple Installation
Tool, not operator, controls installation.
No need for skilled labour.

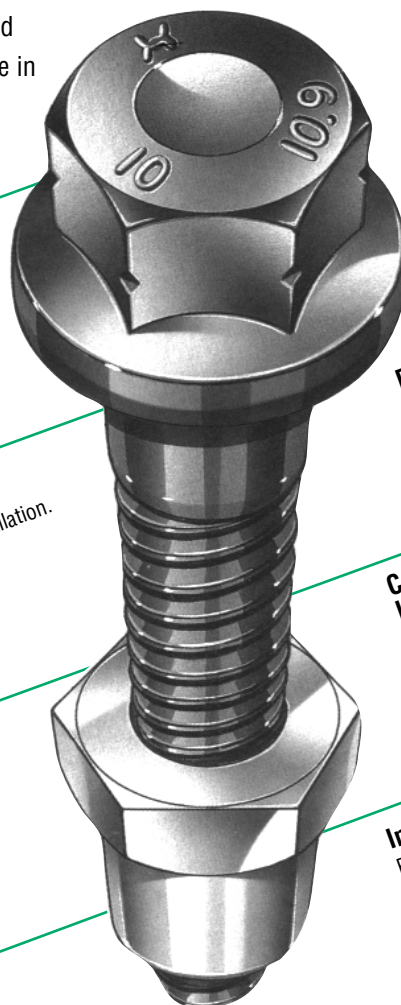
Visual Inspection
No need for X-ray or welding or torque checking of bolts.

Fit-Up Facility
Alignment of components and pre-build capability.

Removability
Simple removal using standard impact wrenches.

Computer Controlled Installation
SP Quality Control and Preventative Maintenance Data.

Improved Working Conditions
Removes danger of injury to operatives by vibration from impact wrenches or high noise levels.



APPLICATIONS

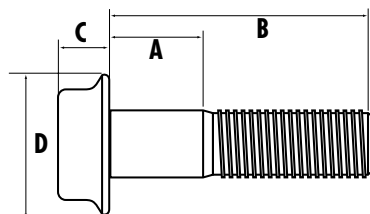
- Truck and Bus Chassis

HuckSpin® Lockbolt

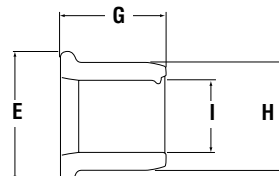
This Grade 10.9 fastening system employs the world's most advanced lockbolt technology to produce a fail-proof joint. Huck-Spin® fastening systems are designed for consistent, reliable installation without the noise and waste associated with pintails. In addition to the round head design, a hex head style is also available which allows the Huck-Spin® to be removed with a standard impact wrench.



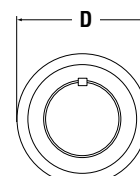
Round Head Metric



Round Flange Pin - MHSPF-DT ("Diameter")-"Grip No."



Round Flange Collar - MHSCF-R ("Diameter")



Fastener Dimensions

12mm Round Head - MHSPF-DT12-"Grip No."

	Grip No.	Grip range(mm)	A	B
C(max) =9.70	10	4-19	4.0	46.04
D(max) =25.50	15	9-24	9.0	51.04
E(max) =26.25	20	14-29	14.0	56.04
G (ref) =18.49	25	19-34	19.0	61.04
H (ref) =19.30	30	24-39	24.0	66.04
I (ref) =12.29	35	29-44	29.0	71.04
	40	34-49	34.0	76.04
	45	39-54	39.0	81.04
	50	44-59	44.0	86.04

Fastener Dimensions

14mm Round Head - MHSPF-DT14-"Grip No."

	Grip No.	Grip range(mm)	A	B
C(max) =11.50	10	4-19	4.0	54.42
D(max) =30.00	15	9-24	9.0	59.42
E(max) =31.00	20	14-29	14.0	64.42
G (ref) =21.40	25	19-34	19.0	69.42
H (ref) =23.15	30	24-39	24.0	74.42
I (ref) =14.45	35	29-44	29.0	79.42
	40	34-49	34.0	84.42
	45	39-54	39.0	89.42
	50	44-59	44.0	94.42
	55	49-64	49.0	99.42
	60	54-69	54.0	104.42
	65	59-74	59.0	109.42
	70	64-79	64.0	114.42
	75	69-84	69.0	119.42

Fastener Dimensions

16mm Round Head - MHSPF-DT16-"Grip No."

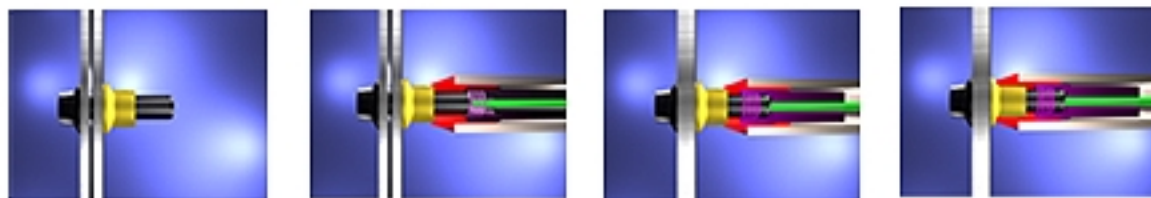
	Grip No.	Grip range(mm)	A	B
C(max) =12.80	10	4-21	4.0	54.41
D(max) =35.00	15	9-26	9.0	59.41
E(max) =34.75	17	10-29	10.0	62.41
G (ref) =23.39	20	14-31	14.0	64.41
H (ref) =25.63	25	19-36	19.0	69.41
I (ref) =16.46	30	24-41	24.0	74.41
	35	29-46	29.0	79.41
	40	34-51	34.0	84.41
	45	39-56	39.0	89.41
	50	44-61	44.0	94.41
	55	49-66	49.0	99.41
	60	54-71	54.0	104.41
	65	59-76	59.0	109.41
	70	64-81	64.0	114.41
	75	69-86	69.0	119.41
	90	84-101	84.0	134.41

Fastener Dimensions

20mm Round Head - MHSPF-DT20-"Grip No."

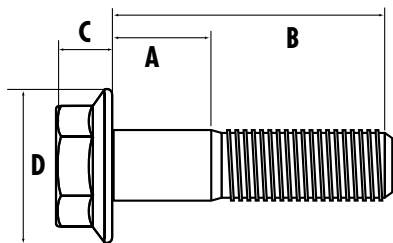
	Grip No.	Grip range(mm)	A	B
C(max) =16.10	15	9-26	9.0	68.24
D(max) =42.50	20	14-31	14.0	73.24
E(max) =43.05	25	19-36	19.0	78.24
G (ref) =28.80	30	24-41	24.0	83.24
H (ref) =32.10	35	29-46	29.0	88.24
I (ref) =20.45	40	34-51	34.0	93.24
	45	39-56	39.0	98.24
	50	44-61	44.0	103.24
	55	49-66	49.0	108.24
	60	54-71	54.0	113.24
	80	74-91	74.0	133.25

Installation Sequence

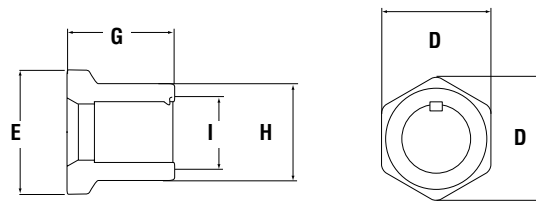


[Click Here to view animation of installation sequence](#)

Hex Head Metric



Hex Head Pin - MHSF-DT ("Diameter")-("Grip No")



Hex Flange Collar - MHSR-R ("Diameter")

Fastener Dimensions

12mm Hex Head - MHSF-DT12-"Grip No."

	Grip No.	Grip range(mm)	A	B
C(max) =12.00	10	4-16	4.0	50.1
D(max) =24.80	15	9-21	9.0	55.1
E (ref) =22.50	17	10-24	10.0	58.1
F (ref) =21.40	20	14-26	14.0	60.1
G (ref) =22.60	25	19-31	19.0	65.1
H (ref) =19.31	30	24-36	24.0	70.1
I (ref) =12.30	35	29-41	29.0	75.1
	40	34-46	34.0	80.1
	45	39-51	39.0	85.1
	50	44-56	44.0	90.1

Fastener Dimensions

16mm Hex Head - MHSF-DT16-"Grip No."

	Grip No.	Grip range(mm)	A	B
C(max) =15.10	10	4-16	4.0	59.54
D(max) =32.80	15	9-21	9.0	64.54
E (ref) =31.87	17	10-24	10.0	67.54
F (ref) =29.31	20	14-26	14.0	69.54
G (ref) =28.60	25	19-31	19.0	74.54
H (ref) =25.65	30	24-36	24.0	79.54
I (ref) =16.45	35	29-41	29.0	84.54
	40	34-46	34.0	89.54
	45	39-51	39.0	94.54
	50	44-56	44.0	99.54
	55	49-61	49.0	104.54
	60	54-66	54.0	109.54
	65	59-71	59.0	114.54
	70	64-76	64.0	119.54
	80	74-86	74.0	129.54

Fastener Dimensions

14mm Hex Head - MHSF-DT14-"Grip No."

	Grip No.	Grip range(mm)	A	B
C(max) =11.92	10	4-16	4.0	54.42
D(max) =28.50	15	9-21	9.0	59.42
E (ref) =29.26	20	14-26	14.0	64.42
F (ref) =26.16	21	15-27	15.0	65.42
G (ref) =25.20	25	19-31	19.0	69.42
H (ref) =23.09	30	24-36	24.0	74.42
I (ref) =14.35	35	29-41	29.0	79.42
	40	34-46	34.0	84.42
	45	39-51	39.0	89.42

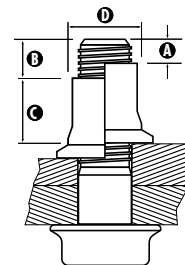
Fastener Dimensions

20mm Hex Head - MHSF-DT20-"Grip No."

	Grip No.	Grip range(mm)	A	B
C(max) =17.70	15	9-21	9.0	73.68
D(max) =46.00	20	14-26	14.0	78.68
E (ref) =37.85	25	19-31	19.0	83.68
F (ref) =34.19	30	24-36	24.0	88.68
G (ref) =34.30	35	29-41	29.0	93.68
H (ref) =32.12	40	34-46	34.0	98.68
I (ref) =20.46	45	39-51	39.0	103.68
	50	44-56	44.0	108.68
	55	49-61	49.0	113.68
	60	54-66	54.0	118.68

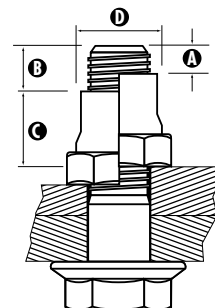
Inspection Data

ROUND HEAD Metric (mm)				
Nominal Dia.	A (Max)	B (Max)	C (Min)	D (Max)
DT12	10.32	22.32	14.0	18.3
DT14	12.04	30.22	15.9	21.9
DT16	13.76	25.76	17.7	24.1
DT20	17.20	29.20	21.2	30.3



Inspection Data

HEX HEAD Metric (mm)				
Nominal Dia.	A (Max)	B (Max)	C (Min)	D (Max)
DT12	10.3	22.3	14.0	18.3
DT14	12.1	24.1	15.9	21.9
DT16	13.8	25.8	17.7	24.1
DT20	17.2	29.2	21.2	30.3



Minimum Installed Values kN

Diameter	Shear	Tensile	Clamp
12	70.1	88.2	61.0
14	95.9	120.0	83.1
16	126.0	163.6	113.4
20	197.0	254.0	181.0

Minimum values, in kilonewtons, of installed fasteners to meet ISO 898 Grade 10.9 high strength bolts. 1kN = 102 kgf or 225 lbf. Clamp force is measured using Skidmore-Wilhelm tester.

Hole Preparation Data

Diameter	Maximum Hole Diameter
12	13.5
14	15.5
16	17.5
20	22.0

How to Order

Metric Huck-Spin Pins

Follow the form below to construct a part number for ordering Metric Huck-Spin pins. Refer to the Grip Data chart for grip numbers.

MHS (STYLE) (TYPE) - (MATERIAL) (DIAMETER) - (GRIP NUMBER) (FINISH)

Example: **MHSPF-DT16-20** is a Metric Huck-Spin Pin, Round Head, Alloy Steel, 16mm Diameter, Grip 20, Black Standard Finish

Style		Material		Diameter		Grip		Finish	
Hex Head	F	Steel	DT	12mm	12	Refer to Grip Data Chart		Black Standard	-
Round Head	PF			14mm	14			Zinc Clear Chromate	G
				16mm	16			Zinc Gold Chromate	U
				20mm	20			Dacromet	D

Metric Huck-Spin Collars

Follow the form below to construct a part number for ordering Metric Huck-Spin collars.

MHS (STYLE) - (MATERIAL) (DIAMETER) - (FINISH) (OPTIONS)

Example: **MHCH-R16U** is a Metric Huck-Fit Collar, Threaded, Hex Flange, Steel, 16mm Diameter, Zinc Gold Chromate Finish

Style		Material		Diameter		Finish	
Thread,		Steel	R	12mm	12	Zinc Clear Chromate	G
hex flange	H			14mm	14	Zinc Gold Chromate	U
Round flange	CF			16mm	16		
				20mm	20		

Installation Tooling

Dia.	Installation Tool	Nose Assembly	Type	Use
12mm	HS37	99-7412-1	Hydraulic	Production
14mm	HS37	99-7414-1	Hydraulic	Production
14mm	HS52	99-7415-1	Hydraulic	Production
16mm	HS52	99-7316-1	Hydraulic	Production
20mm	HS52	99-7418-1	Hydraulic	Production